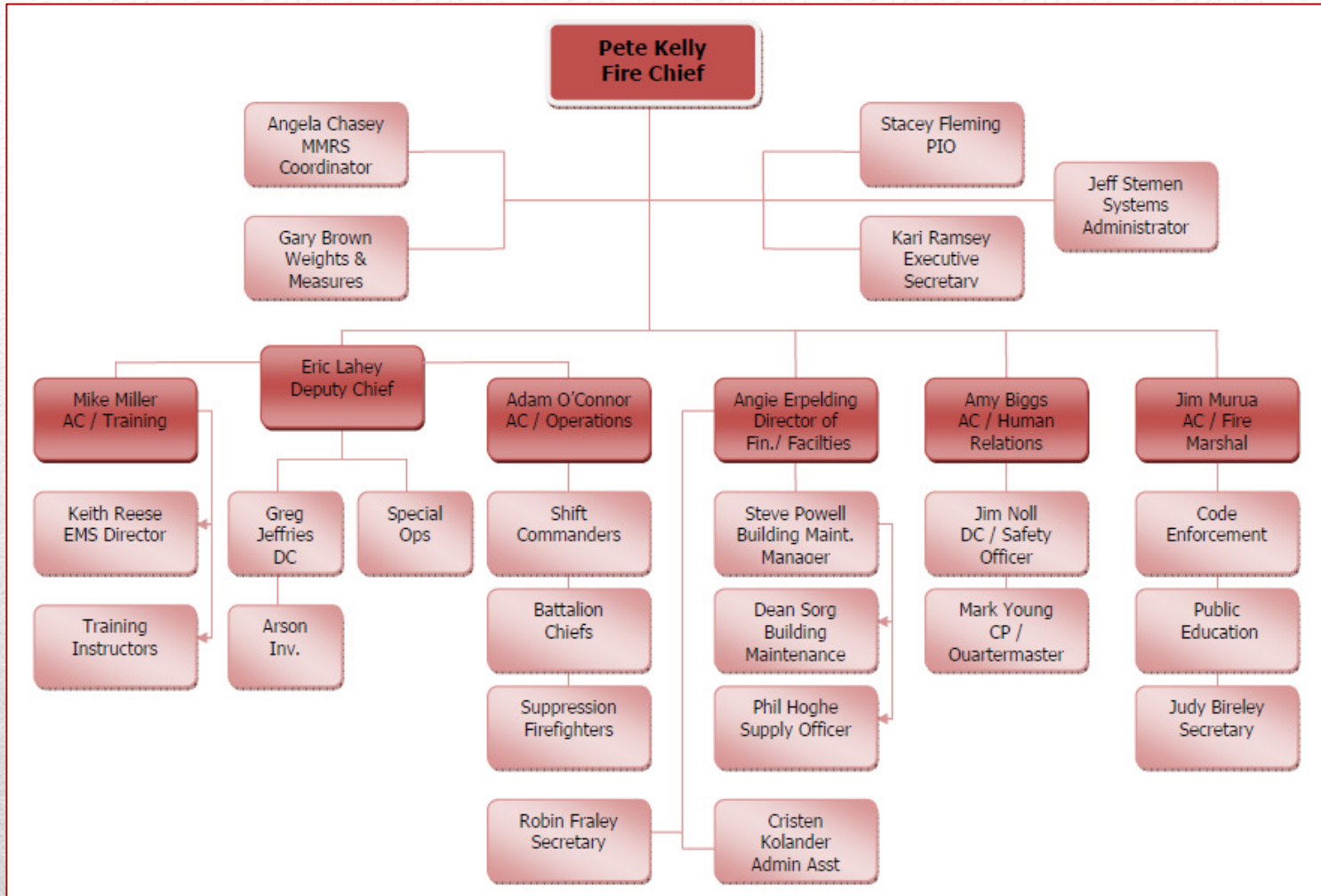




# **Fort Wayne Fire**

2011 Statistical Data

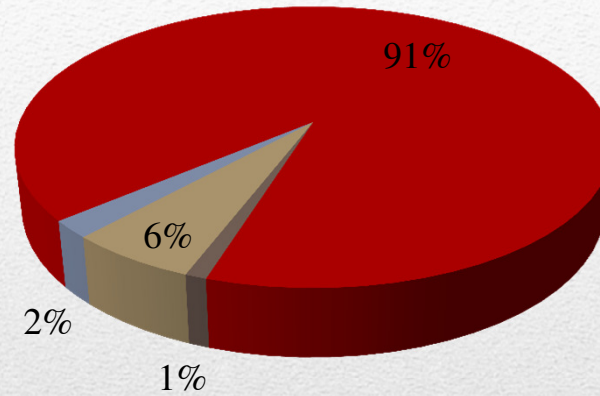
---



# Organizational Chart

# 2011 Budget

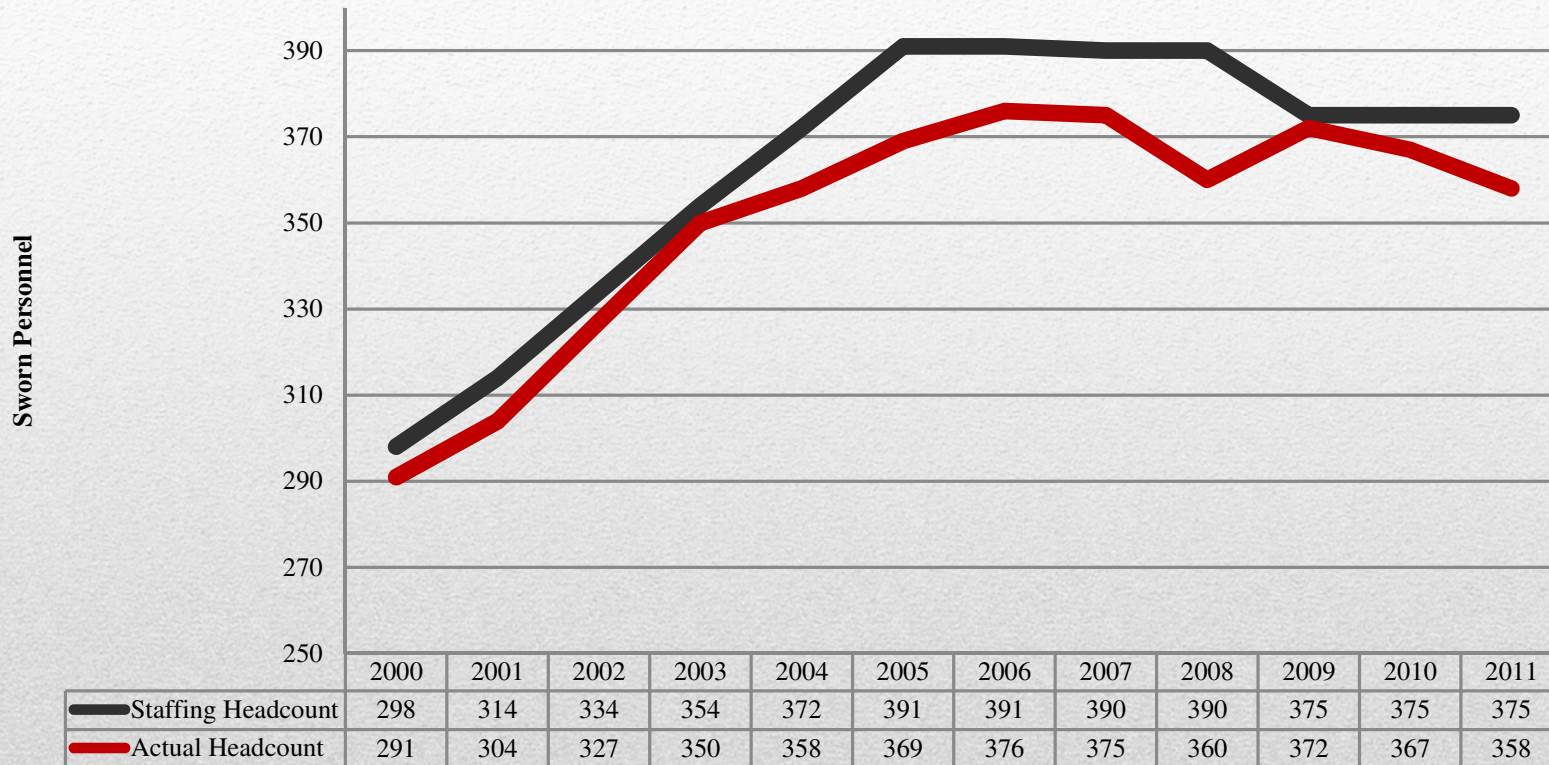
	Expended
Personnel	\$ 32,210,085
Supplies	\$ 486,650
Services	\$ 2,111,970
Capital	\$ 579,936
Total	\$ 35,388,641



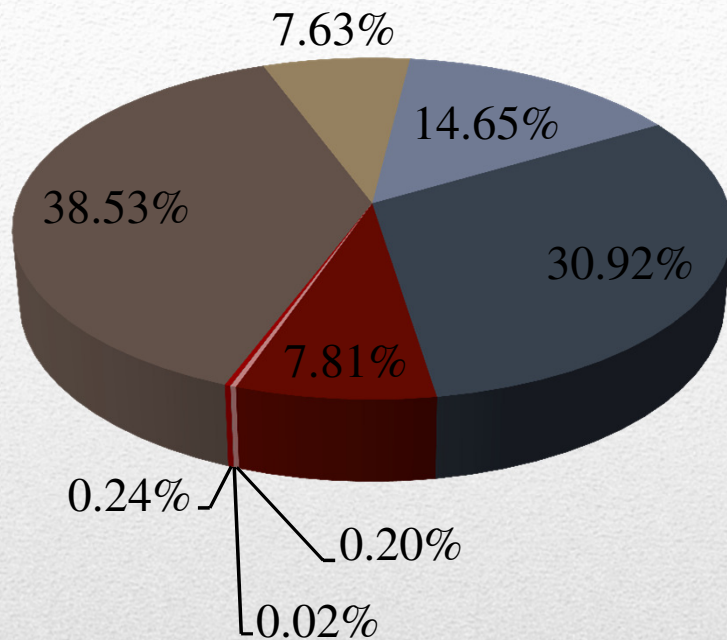
■ Personnel ■ Supplies  
■ Services ■ Capital

# Administration

# Staffing Levels



# Administration



- **Fire**
- **Overpressure**
- **Rescue /EMS**
- **Hazardous Condition**
- **Service Call**
- **Good Intent**
- **False Alarm**
- **Severe Weather**

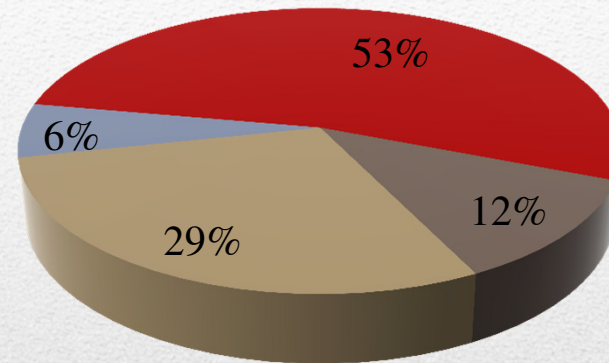
Incident Type	# of Calls	%
Fire	931	5.28%
Overpressure	42	0.24%
Rescue /EMS	6794	38.53%
Hazardous Condition	1346	7.63%
Service Call	2583	14.65%
Good Intent	5452	30.92%
False Alarm	1378	7.81%
Severe Weather	35	0.20%
Special Incident	4	0.02%
<b>Total Incidents</b>	<b>17634</b>	<b>100%</b>

Ems incidents continues to be the #1 response followed by Good Intent (serving the Public in their many needs).

# Operations

# Types of Fire Incidents

Fire Types	Total
Structure Fire	494
Vehicle Fire	110
Outside Trash/Brush Fire	270
Other Fires	57
<b>Total</b>	<b>931</b>



- **Structure Fire**
- **Vehicle Fire**
- **Outside Trash/Brush Fire**
- **Other Fires**

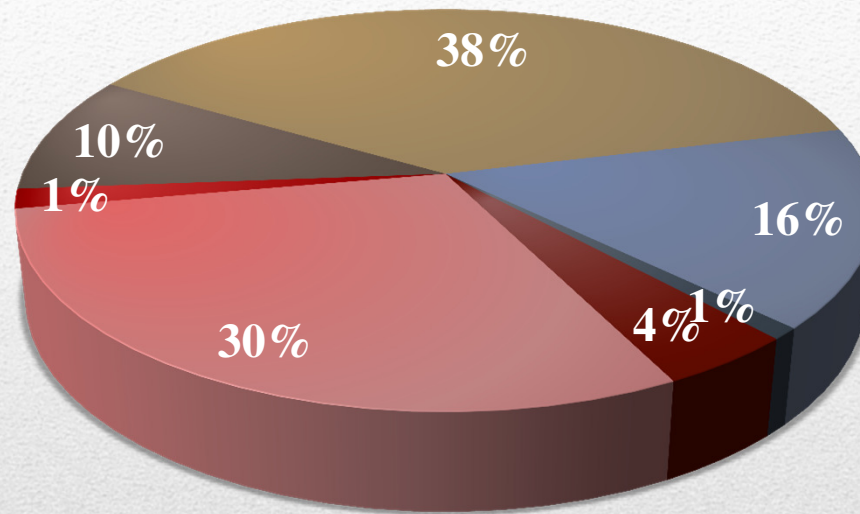
# Operations Division

# Response Times

MONTHLY AVERAGE RESPONSE TIME	
January	4:37
February	4:50
March	4:27
April	4:27
May	4:24
June	4:27
July	4:23
August	4:39
September	4:29
October	4:35
November	4:40
December	4:31
Overall Average Department Response	4:32

# Operations Division

## Fires by Ignition

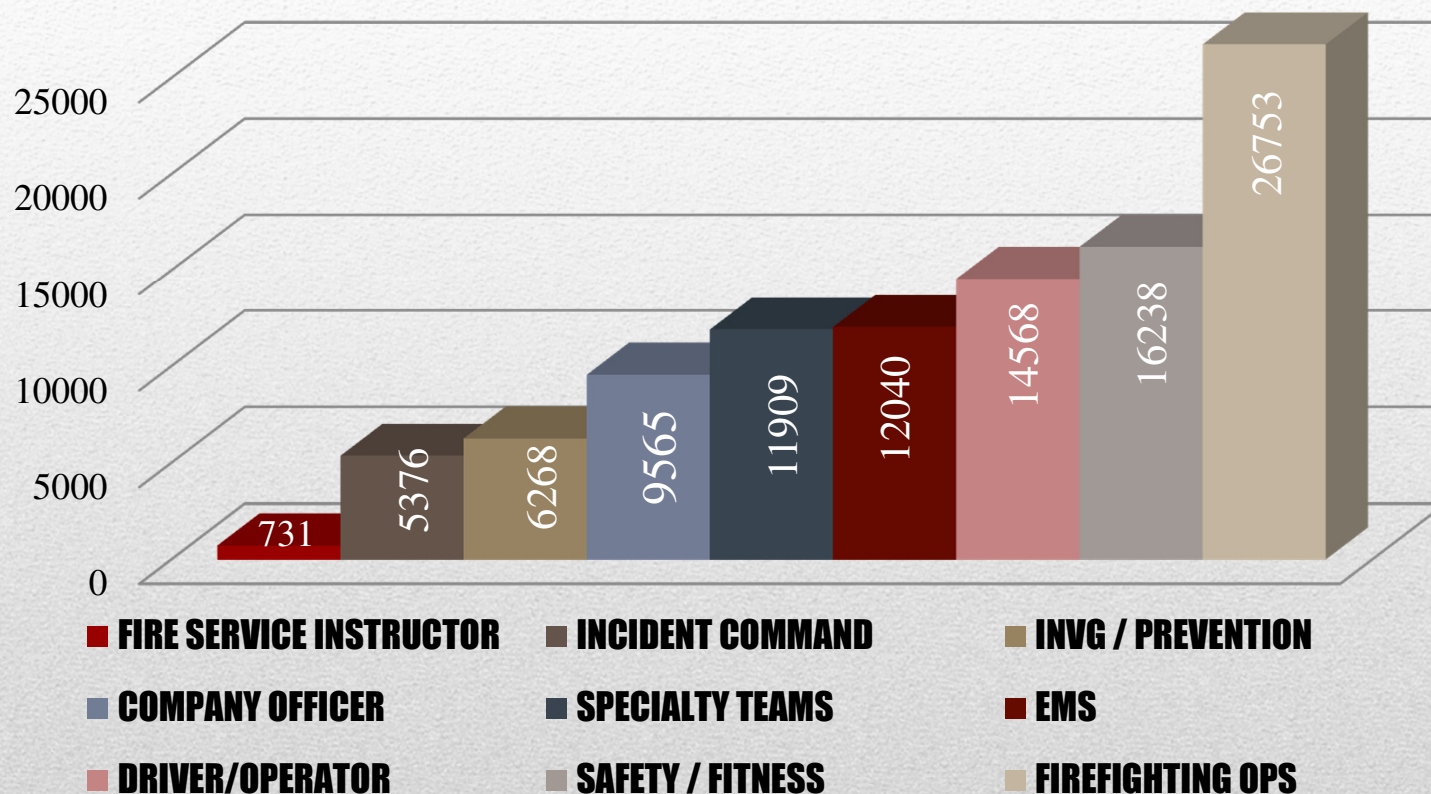


- Cause, Other
- Unintentional
- Act of Nature
- Cause Undetermined After Investigation
- Intentional
- Failure of Equipment or Heat Source
- Cause Under Investigation

# Investigations Division



## Training Hours by Subject



# Training Division

## Inspections by Property Use

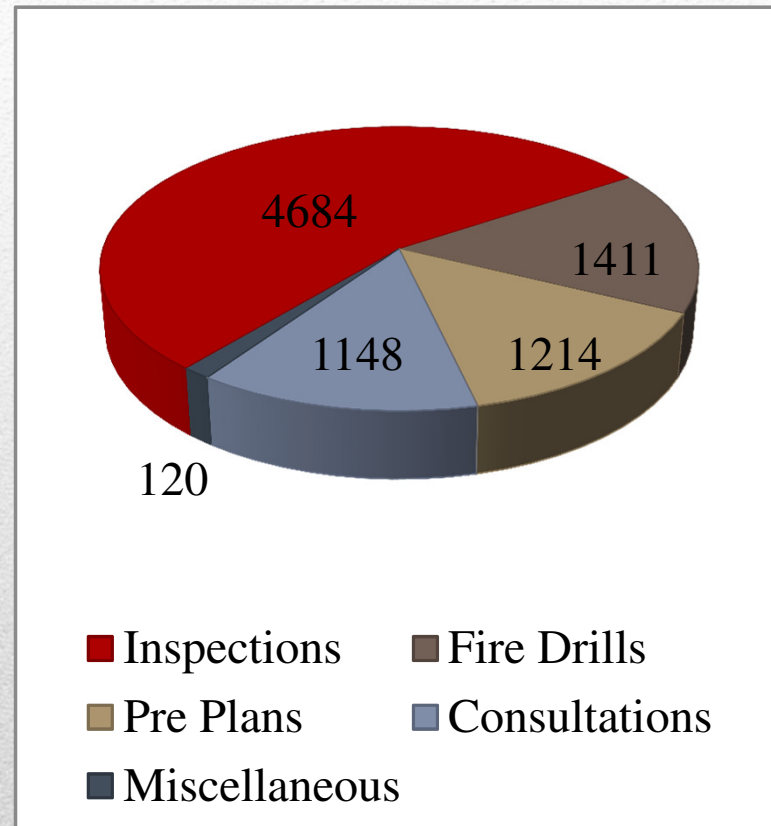
Property Use	1st Qtr	2nd Qtr	3rd Qtr	4th Qtr	Total
Assembly	280	281	279	239	1079
Educational	155	71	41	70	337
Health Care, Detention & Correction	72	27	68	56	223
Residential	154	283	1760	495	2692
Mercantile, Business	737	430	463	427	2057
Industrial, Utility, Defense, Agriculture	80	9	15	11	115
Manufacturing, Processing	106	39	54	40	239
Storage	96	30	18	21	165
Outside or Special Property	12	12	8	0	32
Property use, Other	92	63	67	5	227

# Fire Prevention Bureau

## Inspections by Prop Use

Property Use	#	%
Assembly	1079	15.1%
Educational	337	4.7%
Health Care, Corrections	223	3.1%
Residential	2692	37.6%
Mercantile, Business	2057	28.7%
Industrial, Utility	115	1.6%
Manufacturing	239	3.3%
Storage	165	2.3%
Outside / Other	259	3.6%

## FPB Activities



# Fire Prevention Bureau

# Public Education

PROGRAMS OFFERED	NUMBER OF CHILDREN REACHED
Learn Not to Burn	21,203
Fire Extinguisher	1983
Juvenile Fire Setter	155
Career Talks	260
Fire Safety Talks	491
Pre-Schools	1,155
Survive Alive House	5,377
Pub Ed: Smoke Alarm Installs	271
Pub Ed: Focus on Health	2,507
Pub Ed: Other Presentations	358
Pub Ed: Special Events	16,550

# Fire Prevention Bureau